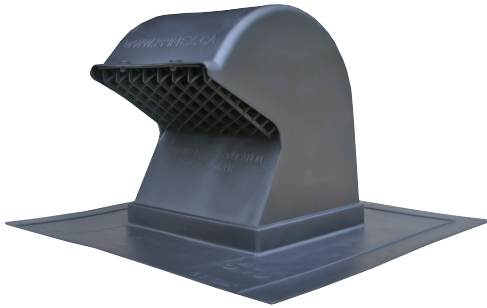




**Builder's Best, Inc.**  
 201 Broiles Drive  
 Jacksonville, TX 75766  
 903-586-8283  
 sales@buildersbest.com  
 BuildersBest.com

# PRIMEX RV28 GOOSE NECK ROOF VENT



## PRODUCT SPECIFICATIONS PLEASE SEE REVERSE FOR CURRENT PRIMEX TECH SPECS

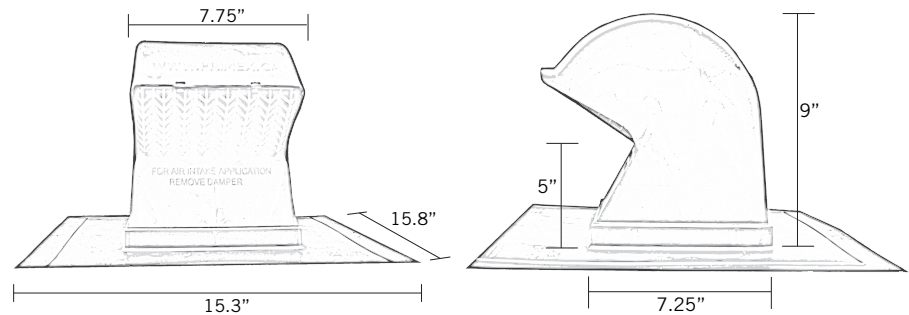
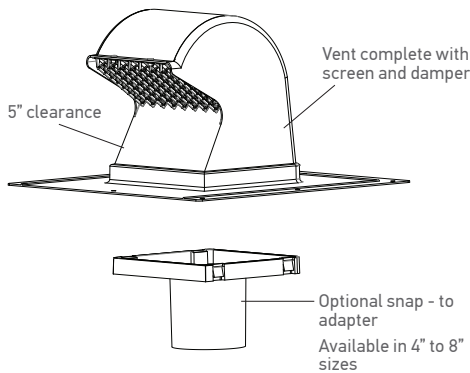
- UV protected polymer resin, black
- One piece molded hood
- Removeable screen
- Removeable damper
- 26.5 square inches free area

## PART NUMBERS

Part numbers shown are stocked.  
 Other Primex items are special orders.

Dia.	Color	Mouth	Damper	Screen	Each #	Qty	Case #	Package
4"-8"	black	wide	removable	removable ½" x ½"	RV2825	5	1RV2825	Bulk

## DIMENSIONS

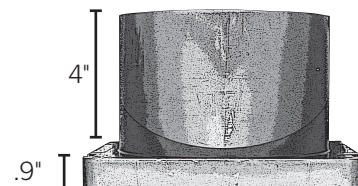
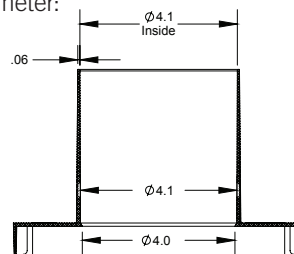


## OPTIONAL SNAP-IN ADAPTER

Dia.	Color	Case #	Each #	Qty	Package
4"	black	1RV28-4	RV28-4	30	Bulk
6"	black	1RV28-6	RV28-6	25	Bulk
7"	black	1RV28-7	RV28-7	25	Bulk
8"	black	1RV28-8	RV28-8	18	Bulk



4" Diameter:



## LABELS

Builder's Best is an  
 Authorized Primex Distribution Partner  
 Primex is Made in Canada by Menzies Group



## WARRANTY

Please contact [hvac@menzies-metal.com](mailto:hvac@menzies-metal.com) for warranty information.

Hood Roof RV28 primex spec sheet V8 7/31/24

# RV28

## Goose-Neck Roof Vent

## Technical Data Sheet

### FEATURES & BENEFITS

- Provides all-weather ventilation with 5" of additional height for snow clearance.
- Maximize inventories turns with single hood size and separate 4 to 8-inch easy snap-in adapters.
- Patented design eliminates leaky joints and maximizes water protection with one-piece, molded hood.
- Ensures watertight installation with over-sized flange.
- Resists damage from sun and hail with UV-protected, impact resistant polymer resin.
- Simple intake/exhaust conversion via removable damper.

### PRODUCT DIMENSIONS

HOOD SIZE: H: 15.7" / W: 15.3" / D: 9.5"

### COLOURS

- Black (25)
- Light Grey (31)
- Dark Grey (28)
- Tan (45)
- Dark Brown (68)

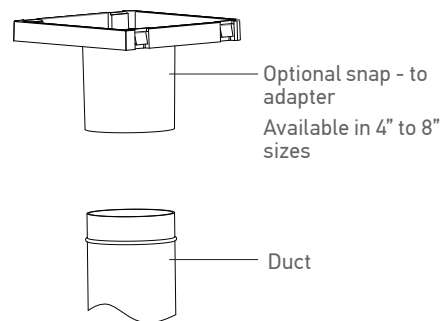
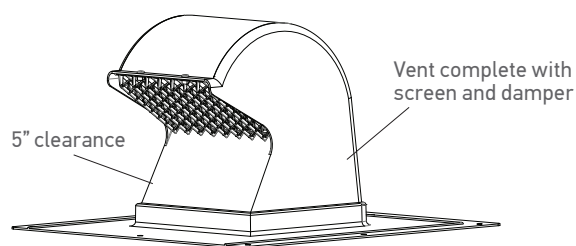
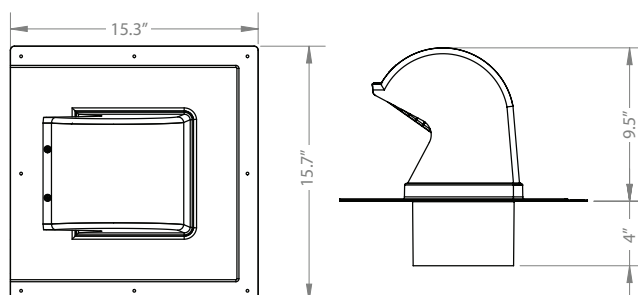
### APPLICATIONS

- Dryer Venting
- Bathroom Venting
- Range Venting
- Heat Recovery Venting (HRV)
- Intake

### PART NUMBER/SIZING

Part #	Size	Free Area	Description	Pkg
RV28	7"x7"x9.38"	26.5 sq. in.	Exhaust vent with screen	5/box (bulk 120 avlbl)
RV28NS	7"x7"x9.38"	31.8 sq. in.	Exhaust vent without screen	5/box (bulk 120 avlbl)
RV28-4	4" Dia.	12.6 sq. in.	Duct adapter: 4"	30/box
RV28-5	5" Dia.	19.6 sq. in.	Duct adapter: 5"	30/box
RV28-6	6" Dia.	26.5 sq. in. 28.3 NS	Duct adapter: 6"	25/box
RV28-7	7" Dia.	26.5 sq. in. 31.8 NS	Duct adapter: 7"	25/box
RV28-8	8" Dia.	26.5 sq. in. 31.8 NS	Duct adapter: 8"	18/box

### TECHNICAL DRAWING



**CONTACT US FOR MORE INFORMATION:**  
1.604.881.7875 | [info@primexvents.com](mailto:info@primexvents.com)

11/18



**primex**  
primexvents.com