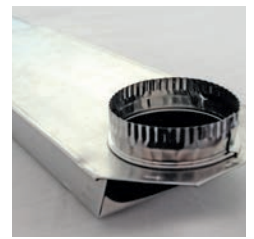
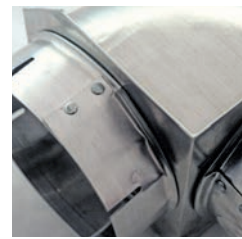




# Dryer Vent Hook-up Guide



## PIPE

## ELBOWS

## PERISCOPES

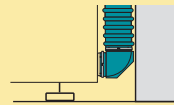
### Clearance

Measure the distance behind the dryer to the wall to determine **clearance** of transition venting. The clearance is usually the most restrictive of the measurements. This is the area where the venting is most likely to be crushed.

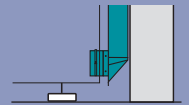
### 6" Clearance



### 4" Clearance



### 2" Clearance



### Length

Measure the distance between the dryer and wall vents for the **length** of venting needed. Flexible aluminum will stretch for long runs. Rigid aluminum periscopes comes in telescoping sizes.

4" Diameter  
5', 6' and 8' lengths

Rigid aluminum protects airflow at 90° turns

0-5 & 0-18  
18-29 & 29-50  
Telescoping sections adjust to length needed

90° turns with pipe take 6" Clearance and 1 foot of length

Elbows make tighter 90° turns and protect airflow at turns

Closest clearance which maintains proper airflow. Angled ends enhance airflow

Builder's Best® carries the most complete line of all metal UL® Listed dryer venting products. The goal of dryer venting is to expel hot air and lint to the outside. Crushed venting will not accomplish this goal, and will contribute to premature deterioration of the appliance.

All metal dryer venting is recommended by: clothes dryer manufacturers, Consumer Products Safety Commission, Energy Star, Chimney Safety Institute of America, US Fire Administration, National Fire Protection Association, Department of Energy, state and local building codes, the Fire Safety Council,  
**and for over 20 years, Builder's Best, Inc.**

Pretreated ends save time

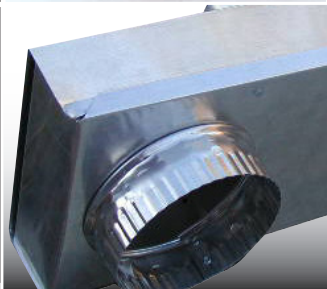
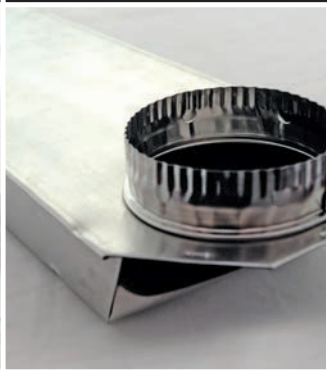
Swivel collars aid in moving the dryer without disconnecting the venting

Swivel collars aid directional airflow

Secure standard (non-Snap-Lock™) connections with clamps

Secure standard (non-Snap-Lock™) connections with clamps

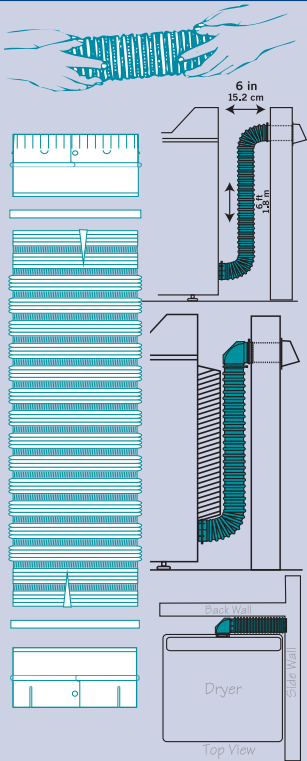
Secure standard (non-Snap-Lock™) connections with clamps



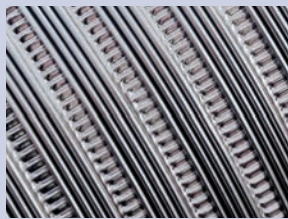
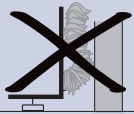
201 Broiles Drive  
Jacksonville, TX 75766  
Tel: 903-586-8283  
Fax: 800-259-8368  
www.buildersbest.com

# PIPE

Pre-treated ends save time and provide secure connections. Thicker pipe means less damage and better airflow.



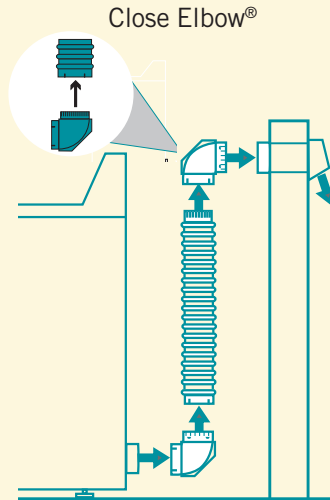
Foil duct is held together with layers of aluminum and polyester. This duct is easily crushed behind the dryer. It also invalidates most warranties.



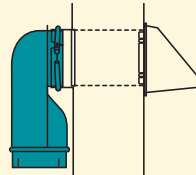
- Slotted fittings go over, crimped fittings go into.
- These fittings snap together, so that clamps are not required. You will need clamps at the dryer and wall.
- Without snap-lock™ fittings, you may need to flatten the pipe at the ends to make the connection.

# ELBOWS

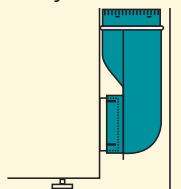
Snap or clamp to pipe for longer runs. Reduce space needed two to four inches over pipe alone. Protect airflow at critical 90° turns.



Wall Offset Elbow®



Dryer Offset Elbow®

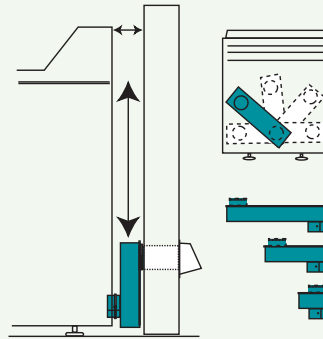


- Fittings swivel to allow pipe to move into position.
- Slotted fittings go over, crimped fittings go into. These snap together without clamps.
- Offset elbows® allow for protrusions from the dryer and the wall.

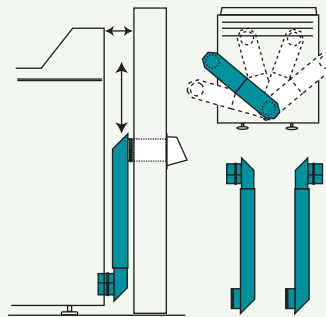
# PERISCOPES

2" x 6" rigid aluminum. Draw band collar for dryer connection. Crimped fitting for wall. Reduce space needed without reducing airflow.

0-5" Zero Periscope  
0-18" Periscope



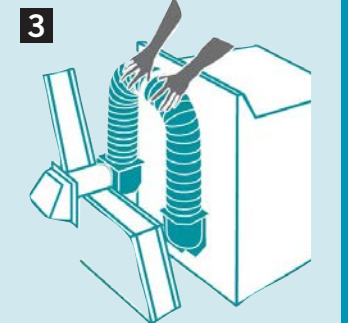
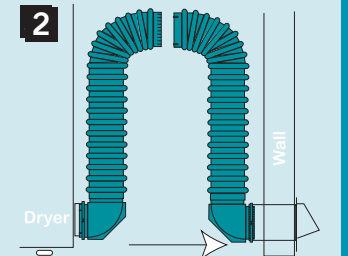
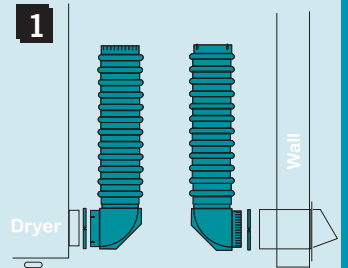
18-29" Periscope



- Zero Periscopes™ handle overlapping dryer and wall pipes.
- 18-29" reaches the side of most dryers
- 29-50" reaches the top of most dryers.
- Same airflow as pipe and elbows.

# KITS

Over-The-Top® Loop system installations provide excellent airflow and are the easiest to install.



- Combinations of Snap-Lock™ Pipe and Close Elbows® make excellent airflow systems.
- This is the easiest system to install.
- Over-The-Top® features a 3 step installation.