



Builder's Best, Inc.
 201 Broiles Drive
 Jacksonville, TX 75766
 903-586-8283
 sales@venting.biz
 BuildersBest.com

GWM620 Mill Finish Galvanized Heavy Gauge Hood with Flapper

2020 REDESIGN

DESCRIPTION

The GWM620 is a heavy duty galvanized wall vent hood.

PRODUCT FEATURES

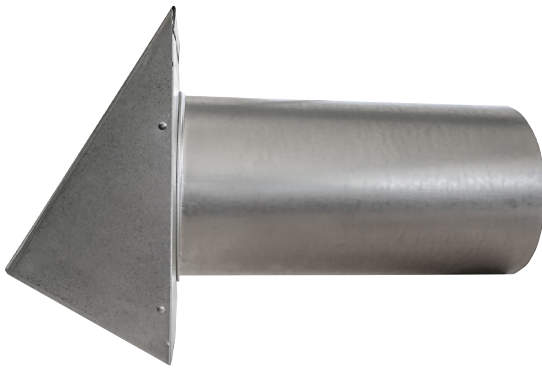
- Riveted construction
- 4 mounting holes for secure connections
- Available without tailpipe, with 6" tailpipe or 11" tailpipe
- Tailpipe features 360° mechanical seam

PRODUCT SPECIFICATIONS

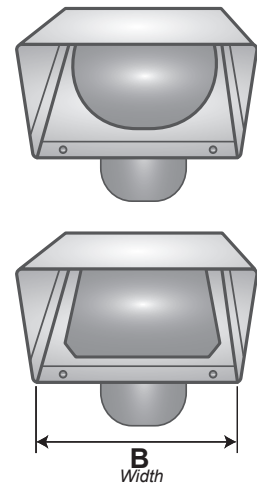
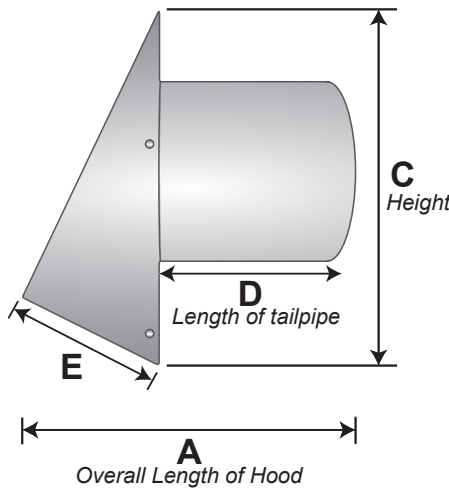
- 26 gauge galvanized mill finish steel
- Flapper (4" rounded, 5"- 12" squared)



PN 12479



PN 12479



PART NUMBERS & DIMENSIONS

Dia.	Tail	Flapper	Screen	Each #	Qty	Case #	Pkg	A (in.)	B (in.)	C (in.)	D (in.)	E (in.)	Open Area
4"	n/a	flapper	n/a	11201	20	111201	Bulk	3.375	5.25	7	n/a	4	18.75
4"	6"	flapper	n/a	11125	12	111125	Bulk	8.875	5.25	7	5.5	4	18.75
4"	11"	flapper	n/a	11135	12	011136	Bulk	14.5	5.25	7	11.25	4	18.75
5"	n/a	flapper	n/a	12474	12	112474	Bulk	4.5	8.25	10	n/a	5.375	40
5"	6"	flapper	n/a	12475	12	112475	Bulk	10.25	8.25	10	5.5	5.375	40
5"	11"	flapper	n/a	12476	6	112476	Bulk	15.75	8.25	10	11.25	5.375	40
6"	n/a	flapper	n/a	12477	12	112477	Bulk	4.5	8.25	10	n/a	5.375	40
6"	6"	flapper	n/a	12478	12	112478	Bulk	10.25	8.25	10	5.5	5.375	40
6"	11"	flapper	n/a	12479	6	112479	Bulk	15.75	8.25	10	11.25	5.375	40
7"	n/a	flapper	n/a	12480	12	112480	Bulk	4.5	8.25	10	n/a	5.375	40
7"	6"	flapper	n/a	12481	12	112481	Bulk	10.25	8.25	10	5.5	5.375	40
7"	11"	flapper	n/a	12482	6	112482	Bulk	15.75	8.25	10	11.25	5.375	40
8"	n/a	flapper	n/a	11209	12	111209	Bulk	4.5	10.25	11.25	n/a	5.5	52
8"	6"	flapper	n/a	11132	10	111132	Bulk	10.25	10.25	11.25	5.5	5.5	52
8"	11"	flapper	n/a	11142	6	111142	Bulk	16	10.25	11.25	11.25	5.5	52
10"	n/a	flapper	n/a	11211	2	111211	Bulk	6.25	12.25	14.25	n/a	7	80
10"	6"	flapper	n/a	11133	2	111133	Bulk	11.75	12.25	14.25	5.5	7	80
10"	11"	flapper	n/a	11143	1	011143	Ind Box	17.5	12.25	14.25	11.25	7	80
12"	n/a	flapper	n/a	11213	2	111213	Bulk	6.25	14.25	14.25	n/a	7	99
12"	6"	flapper	n/a	11134	2	111134	Bulk	11.75	14.25	14.25	5.5	7	99
12"	11"	flapper	n/a	11144	1	011144	Ind Box	17.5	14.25	14.25	11.25	7	99

5-7"
discontinued
model
dimensions
are on page 2
(reverse side)

Discontinued
models on page 2
(reverse side)
will be available
for a short time
to help finish
projects

SHEET METAL DIMENSIONS MAY VARY ± .15 INCHES

LABELS



WARRANTY

Complete Warranty Statement at <https://www.buildersbest.com>

GWM620 spangled flapper & screen V8 8/10/20



Builder's Best, Inc.
 201 Broiles Drive
 Jacksonville, TX 75766
 903-586-8283
 sales@venting.biz
 BuildersBest.com

GWM620 Mill Finish Galvanized Heavy Gauge Hood with Flapper

DISCONTINUED*

DESCRIPTION

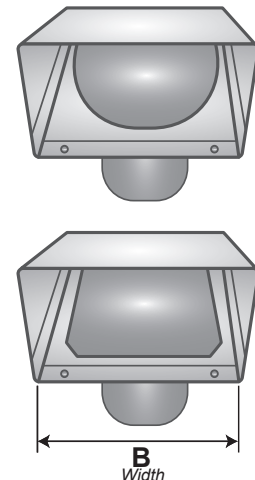
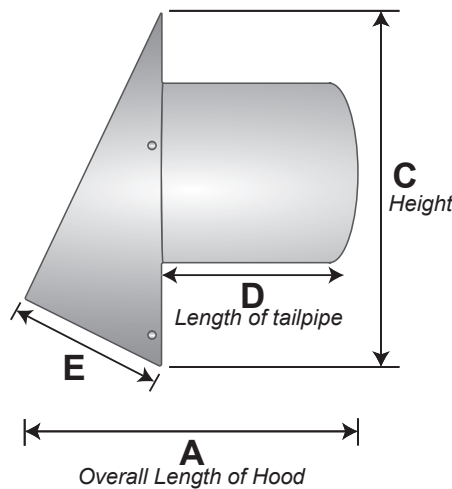
The GWM620 is a heavy duty galvanized wall vent hood.

PRODUCT FEATURES

- Riveted construction
- 4 mounting holes for secure connections
- Available without tailpipe, with 6" tailpipe or 11" tailpipe
- Tailpipe features 360° mechanical seam

PRODUCT SPECIFICATIONS

- 26 gauge galvanized mill finish steel
- Flapper (4-6" rounded, 7- 12" squared)



DISCONTINUED* PART NUMBERS & DIMENSIONS

Dia.	Tail	Flapper	Screen	Case #	Qty	Pkg	B (in.)	C (in.)	D (in.)	E (in.)
5"	n/a	flapper	n/a	111203	12	Bulk	8	9	n/a	4
5"	6"	flapper	n/a	111127	12	Bulk	8	9	6	4
5"	11"	flapper	n/a	111137	6	Bulk	8	9	11	4
6"	n/a	flapper	n/a	111205	12	Bulk	8	9	n/a	4
6"	6"	flapper	n/a	111129	12	Bulk	8	9	6	4
6"	11"	flapper	n/a	111139	6	Bulk	8	9	11	4
7"	n/a	flapper	n/a	111207	12	Bulk	10	11.25	n/a	5.375
7"	6"	flapper	n/a	111131	10	Bulk	10	11.25	6	5.375
7"	11"	flapper	n/a	111141	6	Bulk	10	11.25	11	5.375

**2020
 REDESIGN ON
 PAGE 1
 (reverse side)**

***Discontinued
 models will be
 available for a
 short time to help
 finish projects**

SHEET METAL DIMENSIONS MAY VARY ± .15 INCHES

LABELS



WARRANTY

Complete Warranty Statement at <https://www.buildersbest.com>

GWM620 spangled flapper & screen V8 8/10/20