

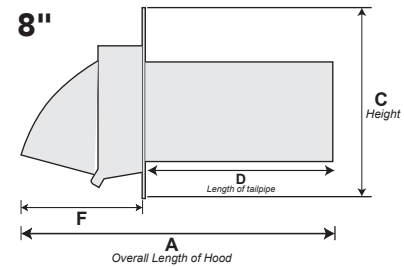
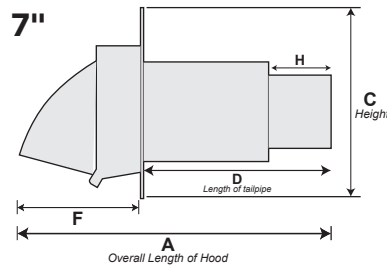
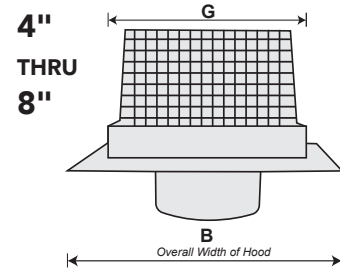
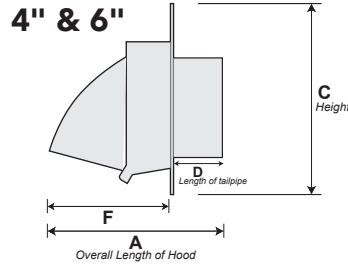
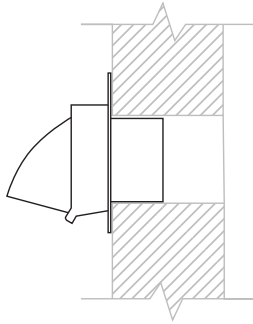
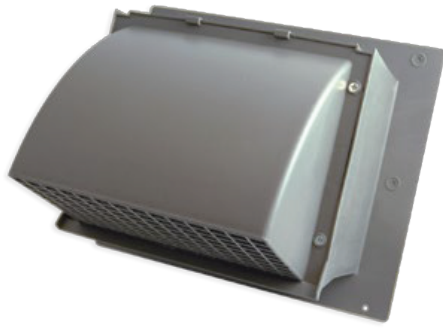


Builder's Best, Inc.
 201 Broiles Drive
 Jacksonville, TX 75766
 903-586-8283
 sales@venting.biz
 BuildersBest.com

PRIMEX WC WALL CAPS INTAKE/EXHAUST WALL CAP VENTS

PRODUCT SPECIFICATIONS

- UV stabilized polymer resin
- Drip edge to help drain away water
- Screen is not removable



PART NUMBERS

Part numbers shown are stocked. Other Primex items are special orders and will require separate POs.

Dia.	Color	Damper	Screen	New case #	Qty	Pkg	A (in.)	B (in.)	C (in.)	D (in.)	F (in.)	G (in.)	H (in.)
4"	white	removable spring	½" x ½"	WC401S	25	Bulk	7.1	8.5	7.8	2.5	4.75	5.6	n/a
4"	white	removable spring	n/a	WC401SNS	25	Bulk	7.1	8.5	7.8	2.5	4.75	5.6	n/a
4"	taupe	removable spring	½" x ½"	WC423S	25	Bulk	7.1	8.5	7.8	2.5	4.75	5.6	n/a
4"	taupe	removable spring	n/a	WC423SNS	25	Bulk	7.1	8.5	7.8	2.5	4.75	5.6	n/a
4"	black	removable spring	½" x ½"	WC425S	25	Bulk	7.1	8.5	7.8	2.5	4.75	5.6	n/a
4"	black	removable spring	n/a	WC425SNS	25	Bulk	7.1	8.5	7.8	2.5	4.75	5.6	n/a
4"	dark grey	removable spring	½" x ½"	WC428S	25	Bulk	7.1	8.5	7.8	2.5	4.75	5.6	n/a
4"	dark grey	removable spring	n/a	WC428SNS	25	Bulk	7.1	8.5	7.8	2.5	4.75	5.6	n/a
4"	light grey	removable spring	½" x ½"	WC431S	25	Bulk	7.1	8.5	7.8	2.5	4.75	5.6	n/a
4"	light grey	removable spring	n/a	WC431SNS	25	Bulk	7.1	8.5	7.8	2.5	4.75	5.6	n/a
4"	tan	removable spring	½" x ½"	WC445S	25	Bulk	7.1	8.5	7.8	2.5	4.75	5.6	n/a
4"	tan	removable spring	n/a	WC445SNS	25	Bulk	7.1	8.5	7.8	2.5	4.75	5.6	n/a
4"	drk brown	removable spring	½" x ½"	WC468S	25	Bulk	7.1	8.5	7.8	2.5	4.75	5.6	n/a
4"	dark brown	removable spring	n/a	WC468SNS	25	Bulk	7.1	8.5	7.8	2.5	4.75	5.6	n/a
5"	white	removable spring	½" x ½"	WC501S	10	Bulk	8.875	11.9	9.9	3	6	8.9	n/a
6"	white	removable spring	½" x ½"	WC601S	10	Bulk	8.875	11.9	9.9	3	6	8.9	n/a
6"	taupe	removable spring	½" x ½"	WC623SNS	10	Bulk	8.875	11.9	9.9	3	6	8.9	n/a
6"	black	removable spring	½" x ½"	WC625S	10	Bulk	8.875	11.9	9.9	3	6	8.9	n/a
6"	dark grey	removable spring	½" x ½"	WC628S	10	Bulk	8.875	11.9	9.9	3	6	8.9	n/a
6"	light grey	removable spring	½" x ½"	WC631S	10	Bulk	8.875	11.9	9.9	3	6	8.9	n/a
6"	tan	removable spring	½" x ½"	WC645S	10	Bulk	8.875	11.9	9.9	3	6	8.9	n/a
6"	dark brown	removable spring	½" x ½"	WC668S	10	Bulk	8.875	11.9	9.9	3	6	8.9	n/a
7"	white	removable	½" x ½"	WC701	2	Bulk	8.875	11.9	9.9	3	6	8.9	2.875
7"	taupe	removable	½" x ½"	WC723	2	Bulk	16.9	15.3	12.6	9	8	12.3	2.875
8"	white	removable	½" x ½"	WC801	2	Bulk	16.6	15.3	12.6	9	8	12.3	n/a
8"	taupe	removable	½" x ½"	WC823	2	Bulk	16.9	15.3	12.6	9	8	12.3	n/a
8"	dark grey	removable	½" x ½"	WC828	2	Bulk	16.9	15.3	12.6	9	8	12.3	n/a

LABELS

Builder's Best is an
 Authorized Primex Distribution Partner
 Primex is Made in Canada



WARRANTY

Please contact Primex info@primexvents.com for warranty information.
 See Pg 2 for Primex Technical Data Sheet

Wall plastic primex WC spec sheet V7 12/23/20

WC Series Intake/Exhaust Wall Cap Vents

Technical Data Sheet

FEATURES & BENEFITS

- Compatible with rainscreen applications via extended base, compensating for cavity between sheathing and cladding.
 - Patented design eliminates leaky joints while maximizing water protection with one-piece molded base and built-in drip edge.
 - Integrity of the building envelope is maintained via a removable hood for simple duct cleaning.
 - Suitable for intake and exhaust applications.
 - Over-sized flange ensures watertight installation.
 - Made with UV-protected durable polymer resin.
 - Highly resistant to mechanical impact including a built-in bird screen.
 - Quick and easy installation.
- * For dryer applications we recommend the no screen 'NS' model.

COLOURS

- Black (25)
- Light Grey (31)
- Dark Grey (28)
- Taupe (23)
- Tan (45)
- Dark Brown (68)
- Snow White (01)

APPLICATIONS

- Dryer Venting
- Bathroom Venting
- Range Venting
- Heat Recovery Venting (HRV)
- Intake

PART NUMBER/SIZING

Part # Screen	Part # No Screen	Size	Free Area	Description	Pkg
WC3	WC3NS	3" Dia.	7.7 sq. in.	Use 3" dia. ducting	25/box
WC4	WC4NS	4" Dia.	9.5 sq. in.	Use 4" dia. ducting	25/box
WC5	WC5NS	5" Dia.	19.6 sq. in.	Use 5" dia. ducting	10/box
WC6	WC6NS	6" Dia.	28.3 sq. in.	Use 6" dia. ducting	10/box
WC7	WC7NS	7" Dia.	38.5 sq. in.	Use 7" dia. ducting	2/box
WC8	WC8NS	8" Dia.	46.8 sq. in.	Use 8" dia. ducting	2/box

RANGE HOOD VENTS

Part #	Duct Boot	Free Area	Description	Pkg
WC310	3" x 10"	30.2 sq. in.	Wall Cap Vent: use with 3" x 10" register boot or slab duct	18/box
WC310K	3.25" x 10"	30.2 sq. in.	Range Hood Vent: use with 3.25" x 10" kitchen transition boot or slab duct	18/box

TECHNICAL DRAWING

