



**Builder's Best, Inc.**  
 201 Broiles Drive  
 Jacksonville, TX 75766  
 903-586-8283  
 sales@buildersbest.com  
 BuildersBest.com

# GWM630 Mill Finish Galvanized Heavy Gauge Hood with Spring Flapper

## DESCRIPTION

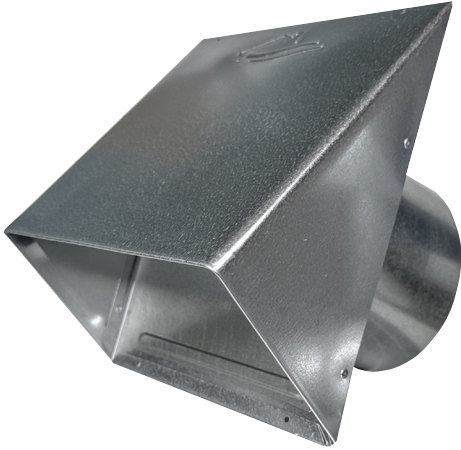
The GWM630 is a heavy duty galvanized wall vent hood with a spring loaded flapper.

## PRODUCT FEATURES

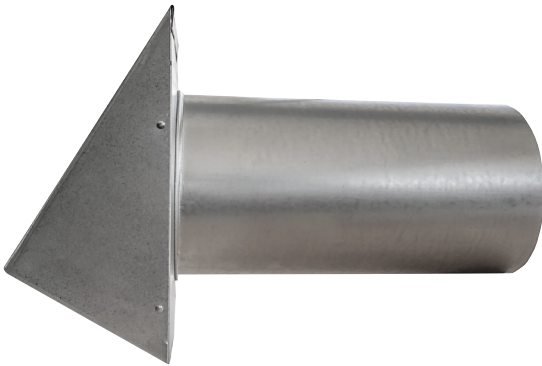
- Spring flapper  
 4" - 7" with channel for sound dampening foam (foam not included)
- 4 mounting holes for secure connections

## PRODUCT SPECIFICATIONS

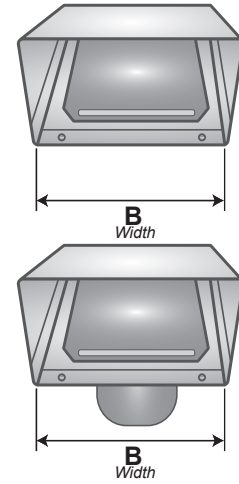
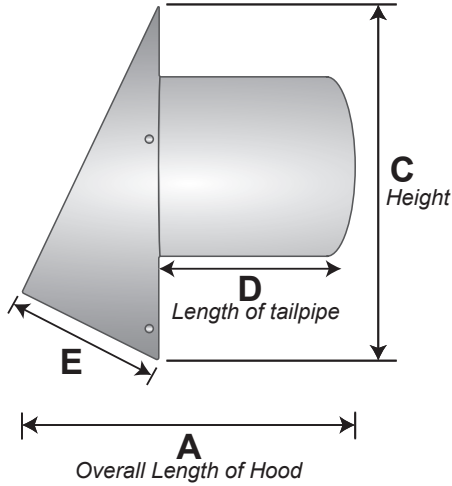
- 26 gauge galvanized mill finish steel
- Riveted construction
- Tailpipe features 360° mechanical seam
- Mouth opening exceeds pipe area



PN 12492



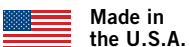
PN 12492



## PART NUMBERS & DIMENSIONS

Dia.	Tail	Flapper	Screen	Each #	Qty	Case #	Pkg	A (in.)	B (in.)	C (in.)	D (in.)	E (in.)	Open Area
4"	11"	spring flapper	n/a	11643	15	111643	Bulk	14.5	5.25	7	11.25	4	18.75
6"	11"	spring flapper	n/a	12492	6	112492	Bulk	15.75	8.25	10	11.25	5.375	40

## LABELS



SHEET METAL DIMENSIONS MAY VARY ± .15 INCHES

## WARRANTY

Complete Warranty Statement at <https://www.buildersbest.com>